

Returns Service Samples for PHP

This folder contains sample code for accessing Returns services via the PHP SOAP library. Samples are provided for these operations:

- CreateAuthReturn
- CreateOpenReturnTemplate
- GetOpenReturnTemplate
- GetOpenReturnTemplates
- GetOpenReturnTemplateDetails
- RetrieveNextOpenReturnArtifact
- DeleteOpenReturnTemplate
- GetArtifact

About These Samples

- These samples are meant to accompany the [Developer Program Getting Started Guide](#). They will help you validate that your Developer Program account is set up correctly, and will help you create your first Returns request.

Conventions

- **<install_directory>** - This is the file folder where you have extracted these code samples into. Examples may include: CPCWS_SOAP_Java_Samples; CPCWS_SOAP_DotNet_Samples, or CPCWS_SOAP_Tracking_PHP_Samples among others.

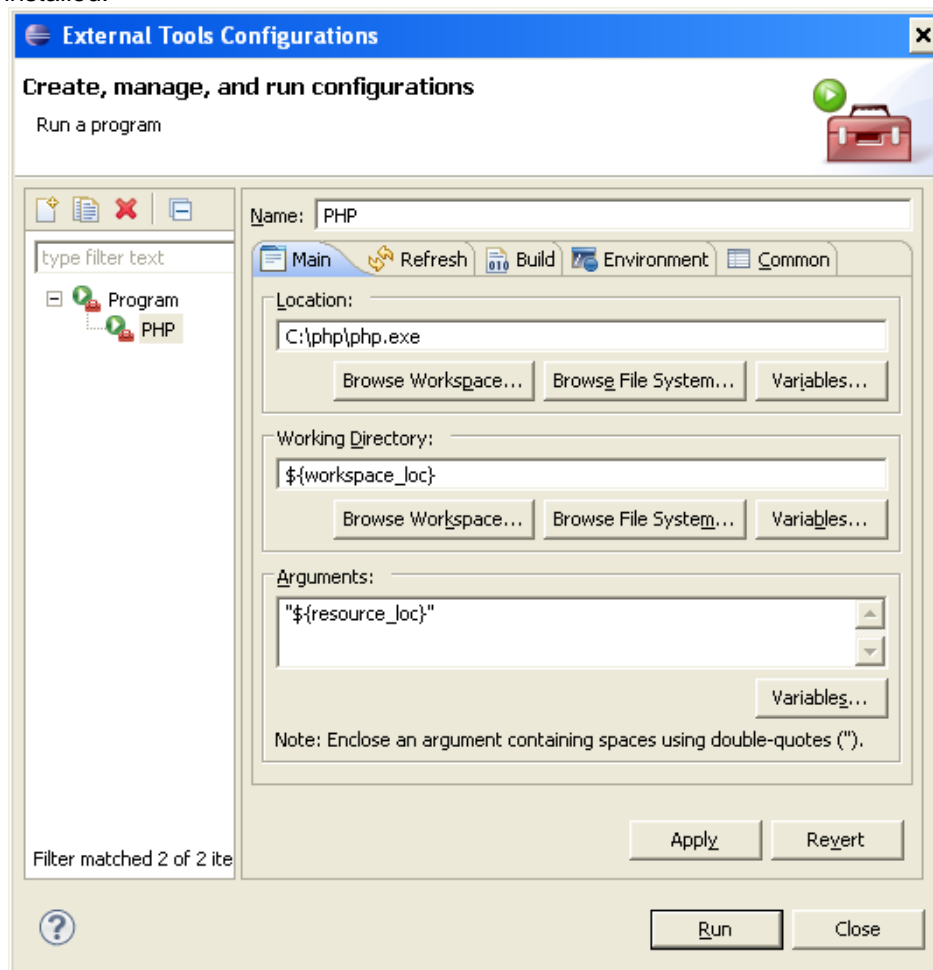
Prerequisites

- You must have a valid Developer Program developer account.
- You must be signed up to use Developer Program.
- Requires PHP 5.2.10 or newer with SOAP and OpenSSL extension enabled in php.ini.
- Also requires Eclipse version 3.6 with PHP Development Tools (PDT) or newer.
 - Follow the instructions on the Eclipse website to install Eclipse. <http://www.eclipse.org/pdt/downloads/>

Running the Samples

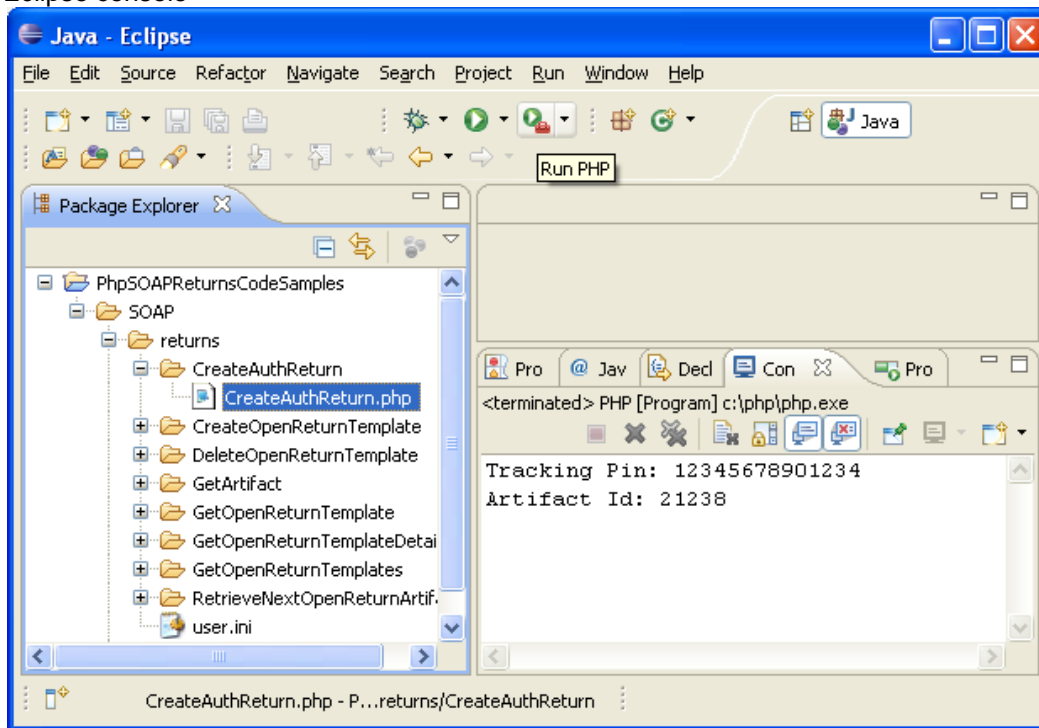
- 1) Configure Eclipse to be able to execute PHP CLI and display output to console.
 - a) From menu select **Run→External Tools→External Tools Configuration...**
 - b) Click on **Program**.
 - c) Click **New** button.

- d) Enter the following configuration and update **Location** to point to where your **php.exe** is installed.



- 2) Click **Apply** button then click **Close** button.
- 3) Import PHP Project from extracted samples package.
 - a) From the main menu bar, select **File → Import...**. The Import wizard opens.
 - b) Select **General > Existing Project into Workspace** and click **Next**.
 - c) Choose **Select root directory** and click the associated **Browse** to locate the directory of the extracted samples and select the **<install_directory>** directory.
 - d) Under **Projects** select the project or projects which you would like to import.
 - e) Click **Finish** to start the import.
- 4) Edit **<install_directory>\SOAP\returns\user.ini** in the folder of extracted package.
 - a) Update this file with your Developer Program username, password and customer number.

- 5) Select **CreateAuthReturn.php** file and Click on **External Tools** icon. View the output in the Eclipse console



- 6) Experiment with the other samples.